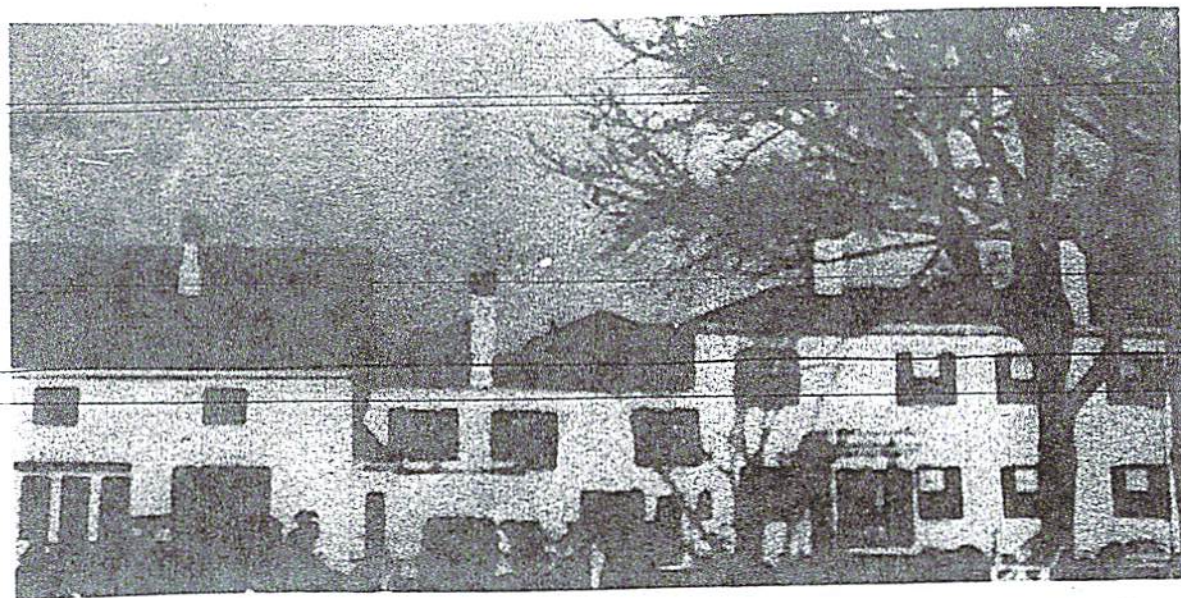


DUXBURY CLIPPER  
MAY 7, 1953

### The Winsor House



In the heart of Duxbury Village stands THE WINSOR HOUSE, a Duxbury landmark since 1800. In 1932 Daniel and Marie Winsor reopened the gates and the Winsor family mansion became a Village Inn, eminently suited to a historic, seaport town. An Inn with a warm, friendly atmosphere, a dignified Inn. Its ancient pine-paneled, heavy-timbered dining room with its hand-hewn beams — its tap room with its Currier and Ives prints, open fireplace, candle-sconces and massive tavern tables, lend a dignified authenticity. Dan Winsor's grandfather invented the first windlass used on ships to hoist heavy anchors. In a chimney corner in the dining room is the original wooden model. On the left you see the old carriage house used in the summer as an extra dining room. The Winsor House is unique.